



T. Renno's team - CRCL
Cell culture

T. Renno's team - CRCL
Therapeutic index calculation



Manipulation under BSC

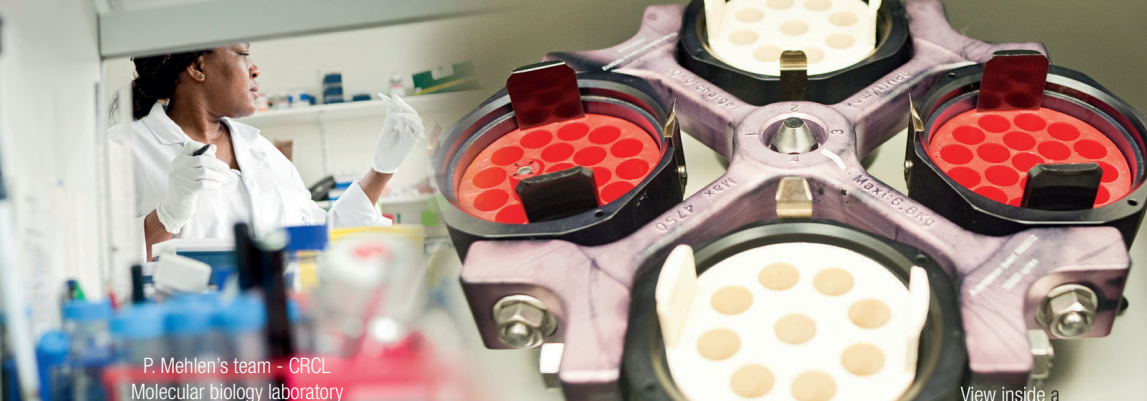
Unit of cytogenetics of
haematological malignancy - Lyon Sud



Day hospital
Léon Bérard Centre



Stéphane Ansieau / Alain
Puisieux's team - CRCL



P. Mehlen's team - CRCL
Molecular biology laboratory

View inside a
centrifuge with test tube rack

Synergie Lyon Cancer is a Foundation for Scientific Cooperation created following the selection, by the Ministry of Research in 2007, of their proposal during a call for proposals in the subject area of "Thematic Networks of Research and Healthcare" (RTRS). Its strategy is based on multidisciplinary collaborations and uniting of mutual resources within highly reputed research centres.

The Synergie Lyon Cancer Foundation relies on a network of researchers and clinicians focussing on:

- understanding the mechanisms that lead to the survival of cancer cells and to the occurrence of metastasis (the spreading of tumours);
- restoring the immune system in order to re-establish the body's natural defence mechanisms, increasing its ability to respond to tumours;
- targeted therapies leading to treatments that are tailored for individual needs.

With a number of key assets:

- a complete **immersion in a network of 150 researchers** of international repute and with projects having an international impact;
- an **area of expertise that attracts the best researchers**,
- **assimilation** into healthcare establishments;
- **flexibility and rapidity in decision making and execution.**

With clear goals:

- of facilitating the identification of new therapeutic targets;
- **of increasing interactions between complementary expertises;**
- of accelerating the process of transferring scientific discoveries into the clinical design of targeted therapies to benefit human health and medical progress.

The objective of Thematic Networks of Research and Healthcare is:

to unite, around a given theme, a critical mass of highly qualified researchers, based within a core group of geographically close research units, in order to be competitive in comparison with the best research centres at an international level. A specific Scientific Cooperation Foundation (Fondation de Coopération Scientifique) status, was created in France to allow these research structures the flexibility and responsiveness they require in order to be competitive at an international level.

With straightforward and effective methods of action:

- **Synergie Lyon Cancer is a key resource** for innovative research programmes;
- it initiates, manages and finances **technological platforms of high quality implanted** within multidisciplinary research and healthcare establishments;
- **It focuses its research efforts** on concepts that are **common** to all cancers.

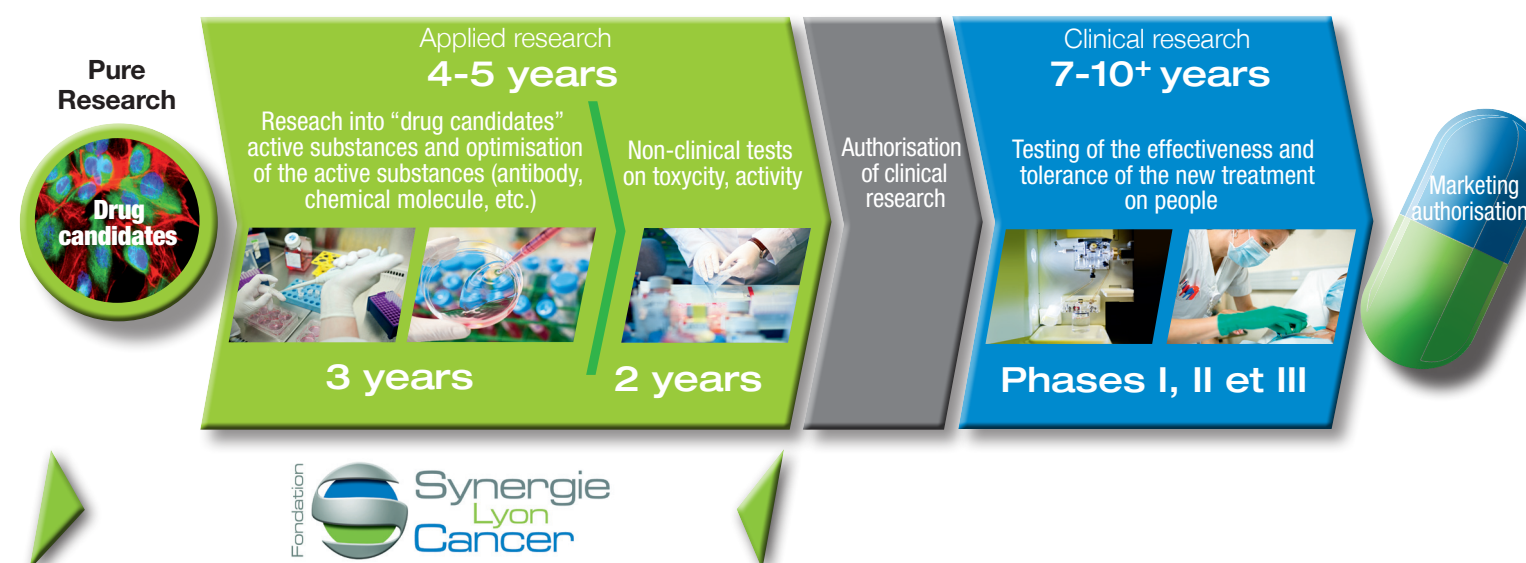
With tangible achievements:

- to establish **"chairs of excellence"**, which provide grants to attract top researchers to Lyon;
- to **develop framework projects open to research teams:**
 - to establish a bioinformatics platform, in collaboration with the INCa (French National Cancer Institute), so as to identify abnormalities leading to the formation of tumours,
 - to develop a Laboratory of Tumour Models to mimic the behaviour of human tumours,
 - to develop a platform enabling the identification and optimisation of "drug candidate" molecules in order to set in motion their clinical and industrial design.

The Synergie Lyon Cancer Foundation allocates 100% of its donations from private individuals and companies to its work for the fight against cancer. The financial revenue generated by its initial endowment fund covers general running costs. It is inspected by a French Government Auditor and by the French Court of Auditors.

From fundamental research to clinical design

Design of specific innovative drugs meeting medical needs that remain unsatisfied:

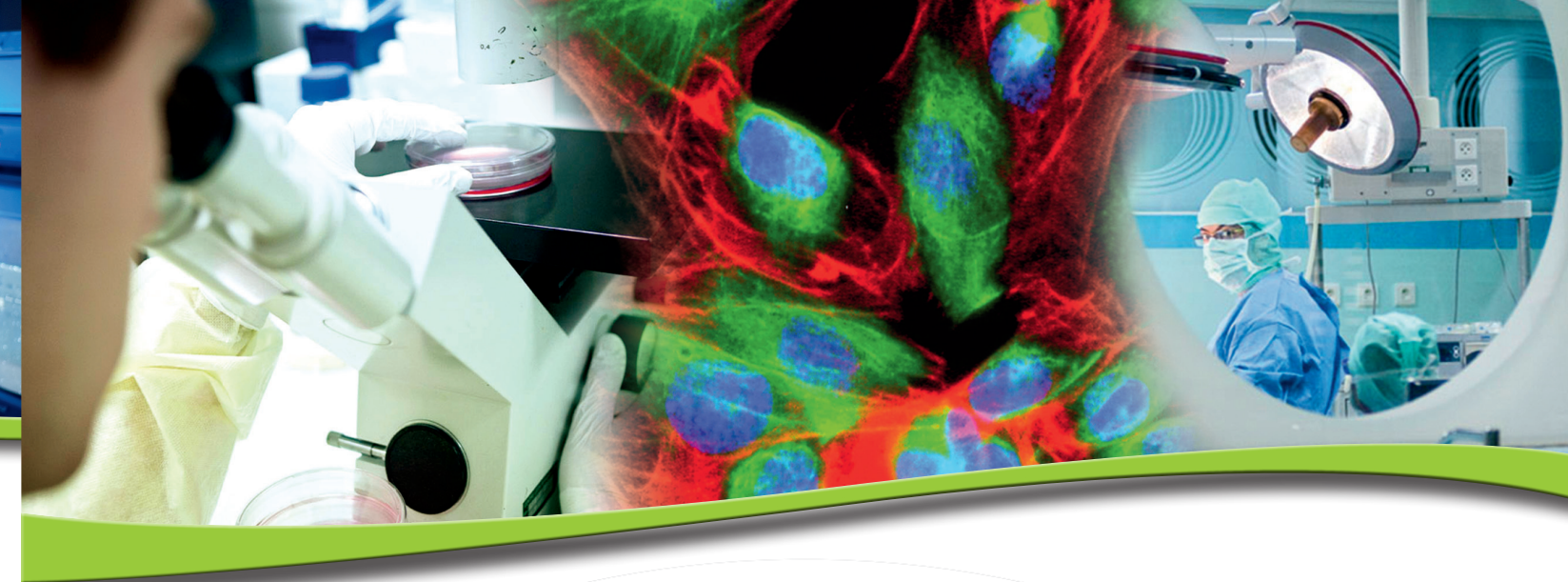


Synergie Lyon Cancer speeds up the process of turning a "drug candidate" molecule into a new treatment and a new hope for patients and their families.



JJ Diaz's team - CRCL
Analyses through confocal microscope

S. Ansieau / A. Puisieux's team - CRCL
Molecular biology manipulations



Cancer, a major human, socio-economic and public health issue:

- two-thirds of people who are actively working at the time of their cancer diagnosis declare, within two years of their diagnosis, that they are more susceptible to tiredness than before, with physical and psychological side effects either due to the illness or to the treatments: discomfort in movement, pain, sleeping problems, memory lapses or difficulty concentrating;
- almost 20% of people who are actively working at the time of their cancer diagnosis are no longer working two years after their diagnosis;
- recent changes: when one considers all cancer types combined, the level of morbidity is increasing, while the mortality level is dropping;
- morbidity: an estimated 365,500 new cases of cancer in 2011;
- mortality: an estimated 147,500 deaths due to cancer in 2011.

Source : «La situation du cancer en France en 2011 – Institut National du Cancer - INCa».

Cancer, a medical and scientific challenge:

"Over the last 20 years, considerable progress has been made. Because we now have a better understanding of the physiopathology, biology and origin of cancer, new therapies have come to light. The survival rate for many cancer types has dramatically increased.

Despite this, there is still an urgent need, for both adults and children, for new therapeutic strategies that take into account the complexity of the mechanisms of carcinogenesis.

These new treatments, which target cancer cells, aim to improve the quality of and prolong a patient's life, as well as to minimise the side effects. They contribute to the development of individual-tailored medicine.

Synergie Lyon Cancer is a Foundation that aims to consolidate the continuum between fundamental research and clinical research. It works and invests towards: speeding up the process of turning innovative scientific discoveries into clinical applications, integrating scientific and medical excellence for the benefit of the patient."

Jean-Pierre Bizzari

Chairman, Synergie Lyon Cancer

A real springboard for research, Synergie Lyon Cancer positions itself at the interface between the different people involved in cancer research.



Synergy : cooperative action to achieve a goal

Synergy is generally a phenomenon by which several participants, factors or influences working in concert together create an effect that is greater than the sum of their independent effects, or create an enhanced effect that could not have been achieved by isolated actions alone.

Synonyms: association, coalition, federation, osmosis.

Your donation is part of this synergy, which is indispensable for the design of new drugs to help in the fight against cancer



Excellence in research
for the benefit of patients

Synergie Lyon Cancer
60, avenue Rockefeller
69008 Lyon - France
www.synergielyoncancer.fr

Your contact:

Marie-Caroline Fiore
Secrétaire Général
+33 (0)4 37 90 17 16
+33 (0)6 74 65 67 02
mcfiore@fondation-slc.com

Photo legend:
• Romain Etienne/Item,
• Daniel Pissaloux (Department of Biopathology,
Léon Bérard Centre) for the photo below:

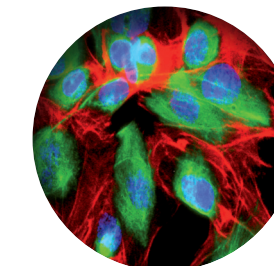


Photo legend:
Use of the fluorescence in situ hybridisation technique for the diagnosis of fatty tumours: the presence of an increase in MDM2 gene expression (the green areas in the photo) in tumour cells confirms a diagnosis of well-differentiated liposarcoma.

Fondation



Synergie
Lyon
Cancer

Excellence in research
for the benefit of patients